

DECT model C944

Wireless handset



Key features

- Crystal-clear voice quality, seamless handover and powerful encryption
- Light slim-line ergonomic handset
- Large graphic LCD
- Illuminated display and keypad
- Alpha Numeric Message Service (LRMS-based)
- Hands-free operation
- Built-in vibrator alert
- Personal phone book
- Call logging
- Redial list
- 12 languages supported
- Incoming call filter
- Date and time display
- Time stamps on messages, caller list and redial list
- Voicemail indicator (CAP)
- Multiple DECT network subscriptions (manual or auto selection)
- Standard headset connection
- Data connector for data exchange (directory, caller filter, message list, software upgrades)
- 200 hours stand-by time
- Up to 20 hours calling time
- GAP/CAP compatible



The DECT handset C944 is a compact business handset that offers a rich set of features, including a large graphic display, internal directory, menu programming and the ability to send and receive alphanumeric messages.

The handset's design pays special attention to ergonomic considerations, to ensure optimal comfort and ease of use. Its various accessories facilitate use in a wide variety of business environments. Both the large graphic display and the keypad are illuminated, allowing the handset to be used in poorly lit environments. The internal loudspeaker and headset options enable hands-free operation with excellent sound quality.

Advanced call-logging features enable incoming calls to be managed efficiently, without losing a single call.

Powerful encryption techniques guarantee secure communication.

For data-application downloads (e.g. C944 configuration or TAPI), the handset can be connected to a PC via a data link.

NEC PHILIPS

NEC PHILIPS UNIFIED SOLUTIONS

Accessories

Belt clip

A removable swivel belt clip makes the handset easy to carry and easily accessible. The handset can be used with or without the clip, which is included in the handset package.



Easy clip

The compact Easy Clip slides over a belt or pocket, where it will retain the handset in a fixed position.



Carrying case

The carrying case with integral belt clip provides additional comfort and protection while wearing the handset. It provides an alternative to the standard belt clip delivered with the handset.

Pouch

A robust leather pouch provides additional protection to the handset. The pouch is used with a swivel belt-clip. The headset can be used even when the handset is in the pouch.



Headset

The comfortable headset has a noise-cancelling microphone and provides multiple user options. The line cord includes an integrated hook switch for easy operation. In-ear ringing and auto-answer features are available when the headset is connected.



Desktop charger

The standard desktop charger charges handsets. It has an elegant design and requires an AC/DC mains adapter.

Charger rack

The charger rack provides a multi-charging option for up to eight handsets simultaneously. The charger rack is suitable for tabletop usage or wall mounting. The multi-charger requires an AC/DC mains adapter.



Data-link cable

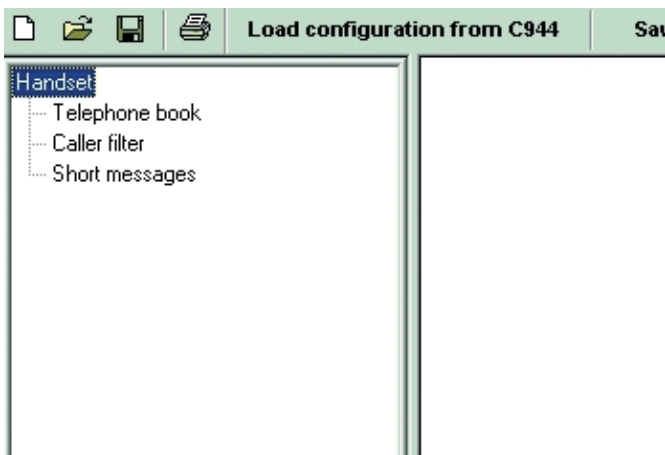
The handset can be connected directly to a PC serial port for downloading and uploading data, such as configuration and TAPI applications. The Data-link cable is also used to load handsets with firmware updates/upgrades.



Application CD-ROM

A C944 configuration application is included on the application CD-ROM. This enables users, via a PC, to enter, edit and delete entries in the personal telephone book, message list and caller filter. Import and export both from and to comma-separated formatted files is also supported.

A TAPI driver for the handset is also included on the application CD-ROM. The TAPI driver allows the handset to be used with other TAPI-supporting applications (e.g. Windows dialler), when connected to a PC.



Expert Services

The C944 is fully supported by our Expert Services. This extensive portfolio of services provides the insight and support needed to get the most out of equipment and applications. The services offered comprise advice, design, customisation, integration, training, maintenance, continuous optimisation and Business Partner services.

Technical data

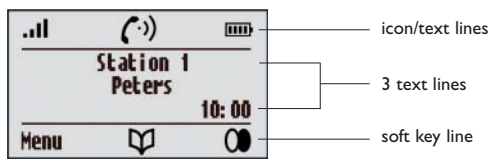
Handset features

- Adjustable earpiece, loudspeaker and headset volume (8 settings)
- Adjustable ringer volume (8 settings)
- Alarm (watch) function
- Alphanumeric messaging (LRMS)
- Auto answer
- Automatic encryption for secure calls
- Built-in vibrator for silent alert
- Call-duration display
- Caller log (last 30 calls answered, missed, rejected or filtered, including date/time stamp)
- Calling time: up to 20 hours
- Call-reject option
- CLI (name & number) support
- Crystal-clear voice quality and seamless handover
- Date & time display
- Date/time stamp on logged calls and received messages
- Easy menu programming
- Headset connection with hook switch in cable (standard 2.5 mm plug)
- 200 hours stand-by time
- Illuminated display and keypad
- Incoming call filter (10)
- Keypad lock
- Light, slim-line, ergonomic design
- Loudspeaker mode for hands-free operation (with indicator)
- Microphone mute
- Multiple menu languages (12)
- Multiple subscriptions (10) with automatic/manual selection
- 20-number redial
- On-hook number preparation with correction option
- Personal phone book (100 entries of 16 characters and 32 digits)
- Quick call (9 numbers)
- Recall/hold (PBX enquiry)
- Removable belt clip
- Ringer melodies (30) with individual melodies for all alerts
- Serial data link to PC

- Silent charging
- SOS key
- Standard rechargeable batteries (3x AAA 1.2V/800mAh NiMH)

LCD display

The graphic LCD (96 x 60 pixels) features a single icon (head) line, three text lines of 16 characters and a soft key line.



The icon line indicates:

- Field strength
- Battery condition
- Off hook
- Loudspeaker indicator
- Message-waiting indicator
- Alphanumeric-message indicator
- Ringer off
- Microphone mute

Icons used elsewhere include:

- Alarm set and enabled
- Caller filter active
- Keypad lock active
- Personal phone book
- Redial soft key

Keys

The handset has 21 keys:

- 2 soft keys
- Up key and down key
- Loudspeaker key
- Hook key
- i-key
- 12-key keypad (0-9, * and #)
- C/On-off key
- R/SOS key

The handset's compactness is enhanced by the use of multiple key functions. The i-key is used to access the i-menu, with caller list, messages and voicemail number (if programmed). If the LED beneath the i-key flashes, pressing the i-key will provide direct access to the caller list, open the message or select the voicemail number, as appropriate.

Menu languages

The C944 supports 12 menu languages:

Czech, Danish, Dutch, English, Finnish, French, German, Italian, Norwegian, Portuguese, Spanish, and Swedish.

Alphanumeric messaging

Text messaging is possible between handsets and in combination with PBX applications. Messages can be received at any time, except when handset power is turned off.

Functions and messaging options:

- Send/receive messages (160 characters)*
- Type: normal/urgent/emergency
- Storage of 10 messages with status indication and date/time stamp*
- Message-list up/download to/from PC

Visible indicators

The display and keypad illuminate upon receipt of incoming calls and messages. The LED indicator beneath the i-key flashes when missed calls are logged, urgent messages are received, and also during a waiting voice message.

Audible indicators

In addition to visible indicators and ringer tones, the handset features a number of user-selectable audible indicators:

- Key click
- Coverage warning
- Battery (low) alarm
- Confirmation tones
- End of menu tone
- Alarm time reached

Note:

* PBX SW release dependent

Power supply

- Handset: 3x AAA 1.2V/800 mAh NiMH
- The desktop charger is powered through a separate AC/DC adapter:
 - input: 230VAC/50 Hz/30 mA
 - output: 7.5VDC 150 mA
 - mains plug: Euro or UK
- The charger rack is powered through a separate AC/DC adapter:
 - input: 100-230VAC/47-63Hz/400 mA
 - output: 7.5VDC 3A
 - mains plug: Euro or UK

Compliance

All C944 handsets carry a CE mark and conform to:

- EMC: EN301 489-1, EN 301 489-6
- EMF: EN50360
- Radio: EN301406
- Telecom: TBR10, TBR22
- Safety : EN60950-1

Physical characteristics

Dimensions (h x w x d):

- Handset: 146 x 53 x 28 mm
 - packaging: 163 x 120 x 36 mm
- Desktop charger: 85 x 78 x 65 mm
 - packaging: 104 x 85 x 65 mm
- Charger rack: 130 x 670 x 84 mm
 - packaging: 135 x 690 x 222 mm

Weight:

- Handset: 140 g
- Desktop charger: 49 g
- Charger rack: 3500 g

Protection:

- Handset: IP50

Radio RF power:

- < 250 mW

Range:

- Indoor: 50m max.**
- Outdoor: 300m max.**

Colour and finishing:

- Handset: black/grey; face plate black/silver; non-gloss
- Desktop charger: black; non-gloss
- Charger rack: black; non-gloss

Environmental conditions

- Temperature range (handset, desktop charger and rack charger):
 - operating: 0° C to +40° C
 - transport: -25° C to +70° C
 - storage: -5° C to +45° C
- Relative humidity (handset, desktop charger and rack charger):
 - operating: 10% - 95%
 - transport: 10% - 100%
 - storage: 10% - 95%
- The equipment is in compliance with the requirements of EU directive 2002/95/EC (RoHS) and 2002/96/EC (WEEE)

Package contents

Each handset package contains:

- C944 handset
- 3 AAA 1.2V/800 mAh NiMH batteries
- Belt clip

Note:

** The range of DECT telephones depends on the environment and the presence of obstacles

The products and services described herein are not necessarily available in all countries. Due to continuous improvements this specification is subject to change without notice. Issued 06/06. Printed in the Netherlands. 3522.001.07871.

For further information please contact your local NEC Philips office or:

NEC Philips Unified Solutions
P.O. Box 32
1200 JD Hilversum
The Netherlands
Phone: +31 35 689 91 11
Fax: +31 35 689 14 50
www.nec-philips.com